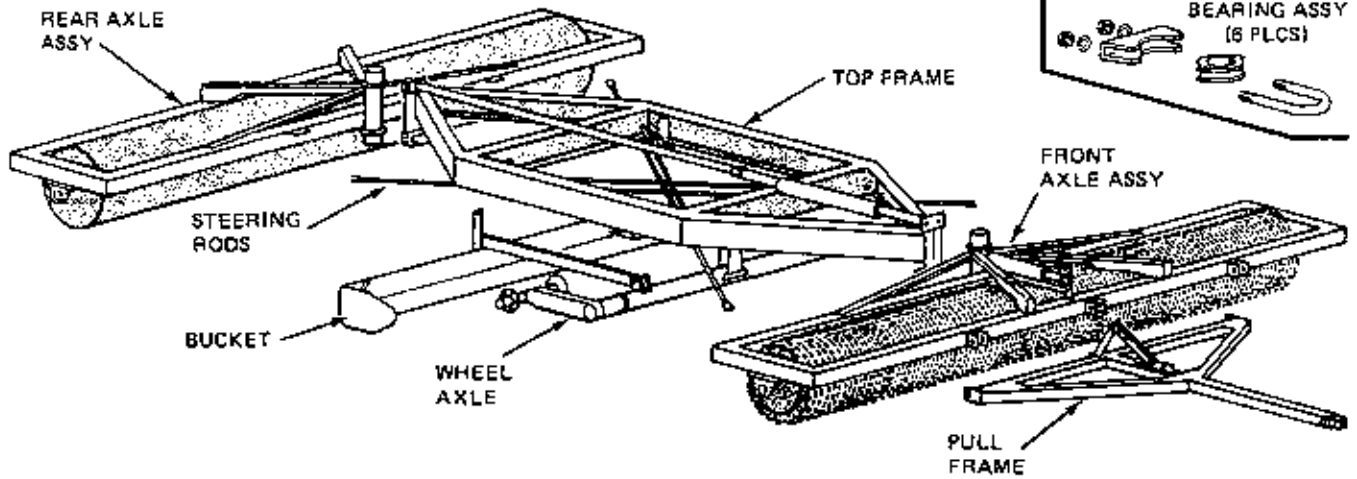




## PARTS LIST

SERIAL NO. \_\_\_\_\_

SIZE \_\_\_\_\_



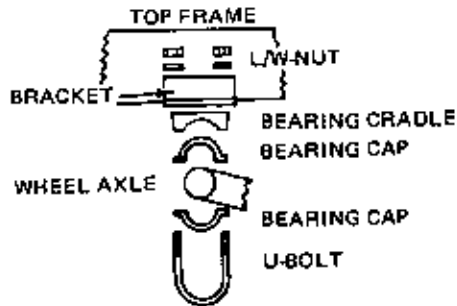
### PART NAME

### PART NO.

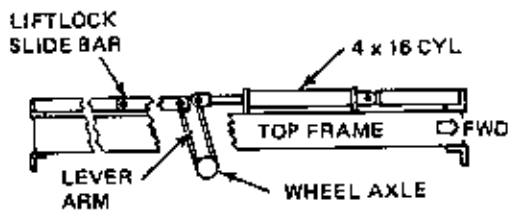
Front Axle Frame Assy	_____
Till An' Pak Roller	_____
Rear Axle Frame Assy	_____
Split Roller	_____
Differential Shaft	SLL 1701
Axle Bearings 1 11/16 PWT-R PB	TPP 3150
<b>TONGUE AND PULL FRAME</b>	
Pull Frame	SLL 1200
Hitch Link Assy	SLL 1201
Hitch Control Loose Link	SLL 1202
Hitch Control Bar	SLL 1203
Hitch Control Slide Bar Lock	SLL 1204
Hitch Clevis	SLL 1205
Hitch Clevis Pin	SLL 1206
<b>TOP FRAME</b>	
<b>CYLINDERS</b>	
Hitch Control Cylinder (2½ x 8)	SLL 1301
Hydraulic Cross Shaft Cylinder (4 x 16)	SLL 1302
Cushion Valve	SLL 1305
<b>CAST IRON BEARINGS</b>	
Bearing Cap (2 required)	SLL 1350
Bearing Cradle	SLL 1351
U Bolt W/Nut and LW	SLL 1352
Complete Bearing Assembly	SLL 1353
Hydraulic Cross Shaft and Wheel Assy (Less Tires)	SLL 1400
Slide Bar Lockout for (4 x 16) Cylinder	SLL 1473
Bucket Assembly	
Bucket Screw Assembly	SLL 1525
<b>TRUSS, STEERING AND STEERING LOCK RODS</b>	
Top Frame Truss Rod	SLL 1601
Steering Rod W/Clevis and Turn Buckle	SLL 1602
Steering Lock Rod	SLL 1603

## ASSEMBLY

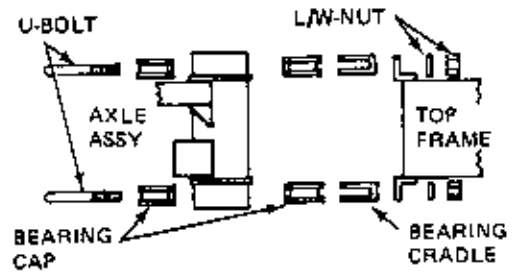
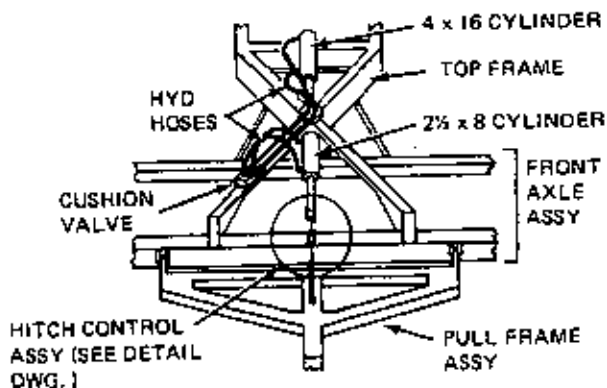
1. Locate front and rear axles, bucket and wheel axle as shown
2. Suspend top frame over bucket and wheel axle
3. Connect front and rear axles as shown



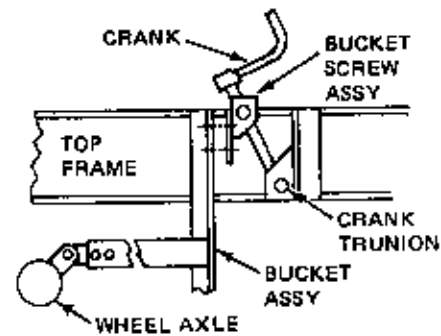
5. Install crank trunions in top frame and screw crank into trunion
6. Bolt bucket screw assembly to bucket
7. Install bucket pull arm pins through arm and axle device



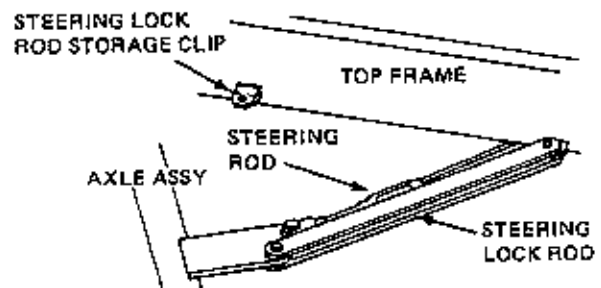
10. Connect steering rods as shown in slotted holes and adjust turnbuckles so that axles are parallel



4. Bolt wheel axle to top frame



8. Connect base end of cyl. (4 x 16) to front end of top frame
9. Place wheel axle lift lock slide bar on top of top frame and connect to wheel axle lever arm



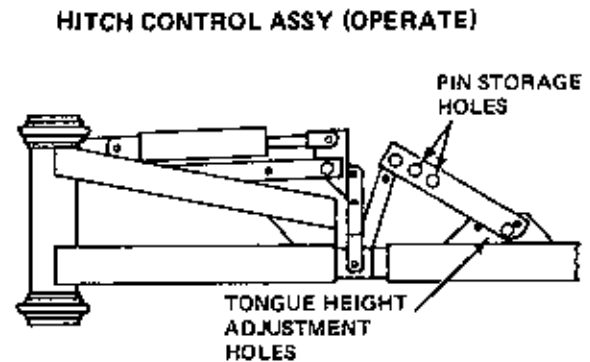
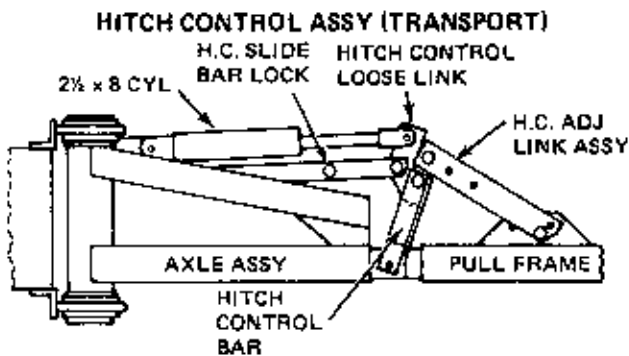
11. Mount pull frame and hitch control w/small cyl. to front axle
12. Mount cushion valve to front axle frame. Short hoses connect to small cyl. Long hoses to 4 x 16 cyl.
13. Tighten all fittings and install steering lockout arm at left front corner
14. Connect lead hoses to cushion valve and tractor
15. Mount tires and wheels

## OPERATING INSTRUCTIONS

1. Pull locking pin for hitch control slide bar lock, and install in pin storage hole. Pull pin connecting hitch control loose link and hitch control bar and place in storage hole.
2. Pull locking pin for cross shaft wheel lift lock and place in storage hole.
3. Disconnect steering lockout from axle and connect to storage clip on top frame.

### FOR TRANSPORT

1. Raise leveler up on hydraulics.
2. Install locking pins in hitch control slide bar and cross shaft wheel lift lock.
3. Connect steering lockout to axle.



### SPECIFICATIONS MODEL 77 ORCHARD LEVELER

#### 10 - 12/16

SIZE	10 x 20	11 x 20	12 x 20	14 x 20
WIDTH	10 ft.	11 ft.	12 ft.	14 ft.
WEIGHT	5240	5520	5800	6320

#### 12 - 14/20

SIZE	10 x 20	11 x 20	12 x 20	14 x 20
WIDTH	10 ft.	11 ft.	12 ft.	14 ft.
WEIGHT	6050	6411	6772	7454

in all sizes

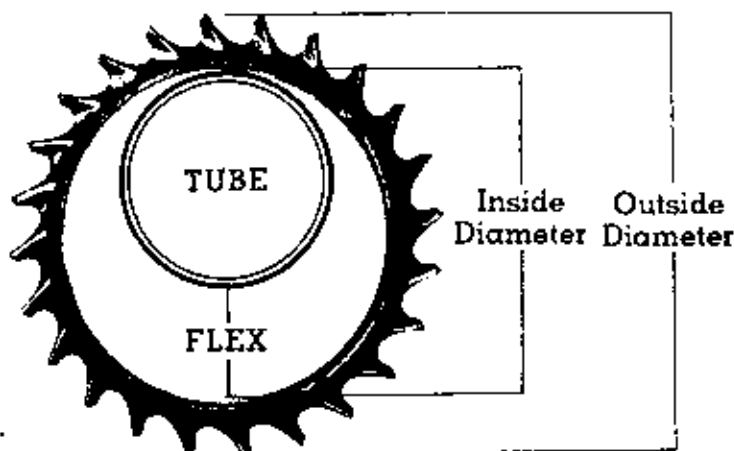
Includes Hydraulic Cylinders 15" wheels & cushion valve  
Hoses Tires & Tubes Not Included.

# Always specify SCHMEISER quality-built parts

When your SCHMEISER implement needs new parts, always be sure you replace with genuine SCHMEISER quality-built parts. They are carefully engineered and designed to give you better performance, greater dependability, and longer life. You'll be money ahead with SCHMEISER.

## Always specify **SCHMEISER** Quality-built parts and rings

When ordering, it is necessary to state width, tube size, and ring size. Tube sizes, ring sizes and amount of flex is shown in the table below. Widths in excess of even foot measurements are charged at the next foot size; a 7 1/2 foot unit is charged as an 8 foot unit.



### SIZE AND SPECIFICATIONS

Ring Size	Inside Diameter	Outside Diameter	Flex 8" Tube	Flex 10" Tube	Flex 12" Tube	Flex 14" Tube
10-14	10 in.	14 in.	1½ in.			
12-16	12 in.	16 in.	3¼ in.	1½ in.		
13-17	13 in.	17 in.	4½ in.	2½ in.	½ in.	
14-20	14 in.	20 in.	5½ in.	3½ in.	1½ in.	
16-22	16 in.	22 in.	7½ in.	5½ in.	3½ in.	1½ in.
16-25	16 in.	25 in.	7½ in.	5½ in.	3½ in.	1½ in.
Smooth	11 in.		2 in.			



**T. G. SCHMEISER CO.**  
INCORPORATED

P.O. Box 1047 • 3160 E. California • Fresno, Ca. 93714  
209/268-8128